



SEPHIRA
SCHOOL OF MUSIC

EASY SUZUKI NOTATION



An easy guide to
Suzuki Violin Book I
Using Sephira Method of Teaching
inspired by Sephira The Irish Rock Violinists

Symbol	Name	Meaning
▣	down bow	bow travels in the direction of the floor
▤	up bow	bow travels in the direction of the ceiling



Twinkle Twinkle

Main theme - Suzuki Book 1 pg 26

We recommend that you write the below instructions into the Suzuki book music so that your child can start adjusting to reading music notation.

(E)
A A E E 1 1 E-
(A)
3 3 2 2 1 1 A-
(A)
E E 3 3 2 2 1-
(A)
E E 3 3 2 2 1-
(E)
A A E E 1 1 E-
(A)
3 3 2 2 1 1 A-

Useful Guide Notes:

- A - open A string (no fingers on the string)
- E - open E string (no fingers on the string)
- (A) - play the named finger on the A string
- (E) - play the named finger on the E string

When you see this line written after a number - the note is held longer - it gets 2 beats (minim)

Symbol	Name	Meaning
▣	down bow	bow travels in the direction of the floor
▤	up bow	bow travels in the direction of the ceiling



2. Lightly Row

Suzuki Book 1 pg 27

We recommend that you write the below instructions into the Suzuki book music so that your child can start adjusting to reading music notation.

(A) (A)
E 2 2- 3 1 1- A 1 2 3 E E E-

(A) (A)
E 2 2 2 3 1 1 1 A 2 E E 2 2 2-

(A)
1 1 1 1 1 2 3- 2 2 2 2 2 3 E-

(A) (A)
E 2 2 2 3 1 1 1 A 2 E E 2 2 2-

Useful Guide Notes:

A - open A string (no fingers on the string)

E - open E string (no fingers on the string)

(A) - play the named finger on the A string

(E) - play the named finger on the E string

When you see this line written after a number - the note is held longer - it gets 2 beats (minim)

Symbol	Name	Meaning
▣	down bow	bow travels in the direction of the floor
▤	up bow	bow travels in the direction of the ceiling



3. Song of the Wind

Suzuki Book 1 pg 28

We recommend that you write the below instructions into the Suzuki book music so that your child can start adjusting to reading music notation.

(A)

A1 23 EE EE

(E) (A) (E)

13 31 E (retake)

(E) (A) (E)

13 31 E (retake)

(A)

E3 33 32 22

21 11 A2 E-

(A)

E3 33 32 22

21 11 A-

Useful Guide Notes:

A - open A string (no fingers on the string)

E - open E string (no fingers on the string)

(A) - play the named finger on the A string

(E) - play the named finger on the E string

When you see this line written after a number - the note is held longer - it gets 2 beats (minim)

(retake) - Make a small down bow circle here with your right elbow and return quickly to the middle of the bow. The elbow, hand and top of the bow should make the same size circle.

Symbol	Name	Meaning
▮	down bow	bow travels in the direction of the floor
∨	up bow	bow travels in the direction of the ceiling



4. Go Tell Aunt Rhody

Suzuki Book 1 pg 29

We recommend that you write the below instructions into the Suzuki book music so that your child can start adjusting to reading music notation.

(A)

2 21 A A 1 1 21 A

(A)

E E3 2 2 1A12 A-

(E)

(A)

2 23 E E 1 1 E3 2

(E)

2 23 E E 1 1 E-

(A)

2 21 A A 1 1 21 A

(A)

E E3 2 2 1A12 A-

Useful Guide Notes:

A - open A string (no fingers on the string)

E - open E string (no fingers on the string)

(A) - play the named finger on the A string

(E) - play the named finger on the E string

When you see this line written after a number - the note is held longer - it gets 2 beats (minim)

Symbol	Name	Meaning
▣	down bow	bow travels in the direction of the floor
▤	up bow	bow travels in the direction of the ceiling



5. O Come, Little Children

Suzuki Book 1 pg 29

We recommend that you write the below instructions into the Suzuki book music so that your child can start adjusting to reading music notation.

V (A) (A) (A) V
E E 2E E 2E 3 11 2'

V (A) (A) (A) V
E E 2E E 2E 3 11 2'

V (E)
2 1 11 3 33 2 22 1'

V (A)
1 E EE 3 E2 3 11 A

Useful Guide Notes:

A - open A string (no fingers on the string)

E - open E string (no fingers on the string)

(A) - play the named finger on the A string

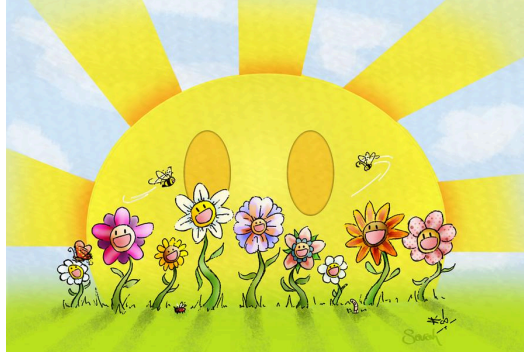
(E) - play the named finger on the E string

' This sign at the end of a line signals the end of a phrase

V - this means to play this note on an UP bow - when a phrase ends on an UP bow, stop the bow lightly in the middle of the bow and play the next UP bow without retaking the bow

The first note of the piece is a short note and is called an upbeat which leads into the rest of the piece - play it lightly in the middle of the bow

Symbol	Name	Meaning
▣	down bow	bow travels in the direction of the floor
▤	up bow	bow travels in the direction of the ceiling



6. May Song

Suzuki Book 1 pg 31

We recommend that you write the below instructions into the Suzuki book music so that your child can start adjusting to reading music notation.

(A) (E) (A) (A)
A- 2 E 3 131 E- 3- E 2 A 1- A-

(A) (A) (A) (A)
E E 3 3 2 E2 1- E E 3 3 2 E2 1-

(A) (E) (A) (A)
A- 2 E 3 131 E- 3- E 2 A 1- A-

Useful Guide Notes:

A - open A string (no fingers on the string)
E - open E string (no fingers on the string)
(A) - play the named finger on the A string
(E) - play the named finger on the E string

Practice the dotted world rhythm “Pineap - ple Pop Corn” on open A & E strings.

Symbol	Name	Meaning
▣	down bow	bow travels in the direction of the floor
▤	up bow	bow travels in the direction of the ceiling



10. Allegretto

Suzuki Book 1 pg 35

We recommend that you write the below instructions into the Suzuki book music so that your child can start adjusting to reading music notation.

(D) (A) (D) (A) (D) (A)

D1 2 2A 3 31 A A3 2 2A

(D)

3 32 1 13 2 21 D D1 (D)

(A) (D) (A) (D)

2 2A 3 31 A A3 2

(D)

2A 3 32 1 21 D - REST D2

(D) (G) (D)

1 11 1 13 2 DD D 2A

(D) (A) (A) (D)

3 31 A A3 A 32 1- - D1

(D) (D) (A) (D) (A)

2 2A 3 31 A A3 2 2A

3 32 1 21 D - REST

Useful Guide Notes:

A - open A string (no fingers on the string)
D - open D string (no fingers on the string)
(A) - play the named finger on the A string
(D) - play the named finger on the D string

SECTION C)

FINGER PATTERN SECTION C: 1ST & 2ND FINGERS TOGETHER ON A STRING
2ND & 3RD FINGERS TOGETHER ON D STRING

This section starts with a DOWN bow

(A)					(D)	(A)			
3	21	A	1	A1	3	2-	21	A—	
(A)		(D)	(A)		(D)				
3	21A3	4	21A3	2	1D	2	3—		

Useful Guide Notes:

A - open A string (no fingers on the string)

E - open E string (no fingers on the string)

(A) - play the named finger on the A string

(E) - play the named finger on the E string

V - this means to play the note on an UP bow

a sharp sign tells you to play the note a semitone higher in pitch - a semitone is also known as a half step

- when this dash follows a note it means to hold it for 2 beats

— when this longer dash follows a note it means to hold it for 3 beats